



PACIFICA Ink

National Executive Newsletter, August 2009, Number 3. (www.pacifica.org.nz)



**Eti Laufiso,
QSM, JP**

*Eti was our 3rd
National
President from
1985-1989
after Eleitino
Paddy Walker
and the late
Louisa
Crawley.*

*Eti was the 2nd
Southern Vice-
President in
1978 (after
Johnny Frisbee)
and initiated
the Southern
mini-
conference.*

Tribute to Eti Laufiso

(2 November 1939 - 1 August 2009)

Eti was the loved daughter of the late Filomena & Ivala Leifi, loved sister of Marie Ripley (Samoa), Mika Tuai (Samoa), the late Sale Ivala (formerly Dunedin) and Keli Faleaupo (Auckland). Dearly loved and beautiful wife of Mikaele Filipo. Adored and respected Mother to Marie, Philippa & Hiliako, Tillie, Michael & Reitu, Mafutaga & Tauleva and Filomena.

Eti was a trained primary school teacher and a lecturer in teacher education at Dunedin Teachers' College. During most of the 1980s Eti worked in the Department of Education in Maori and Islands education. She worked tirelessly with Pacific teachers and in early childhood education having graduated from Victoria University with a Diploma in Teaching English as a Second Language in the early 80s. Eti collaborated closely with the late Louisa Crawley, another Past National President, on a number of initiatives in the then newly-formed Ministry of Pacific Island Affairs. They supported each other closely until Louisa died. It was in 1986 as National President of PACIFICA and an Education Officer that Eti was part of a team that developed the submission to the Van Leer Foundation which would become the Anau Ako Pasifika Project: a Home-based early childhood intervention project which worked with parents to involve their children in early learning and to access early childhood education and in the transition of their children to school.

Eti was also instrumental in working with Te Tari Puna Ora o Aotearoa/New Zealand Childcare Association to establish a training course for Pacific women in early childhood education in the 1980s; opening the door for many Pacific women entering that sector. She also worked weekly on Wellington Access radio fronting the Samoan language programme and was a staunch advocate for the retention of Samoan language and culture across the education system. Eti spoke te Reo and worked with tangata whenua particularly during the years of the Tomorrow's Schools policy development under the Lange government consulting with communities up and down the country.

Eti was a bold and forthright person because she was passionate about Pacific education, Pacific students and their communities and was strengthened by her Christian faith. Eti always maintained that the fact PACIFICA existed was a political act and as such we were saying Pacific women are here in this community, we are strong and we are capable!



(L to R) Current Southern VP **Debra Kesha-Lloyd**, Co-President Dunedin Central branch **Jules Kesha**, **Eti**, and **Emma Kesha** during a visit in April this year.

Our Mailing Address

PACIFICA Inc, PO Box 5668, Lambton Quay, Wellington 6145



A First for PACIFICA: Tamaki speaks at select committee hearing

In an act that Eti would have been very proud of, our Tamaki branch spoke to their submission on the Auckland Regional Governance legislation.

As far as we know, this is the first time PACIFICA has made representations before a select committee.

At the table for Tamaki was **Peta Mua** (President), **Maria Meredith** (Secretary) and **Josephine Bartley** (Northern VP). Tamaki's strong advocacy included:

- retaining established identities within each area eg. Manukau's cultural, diverse, ethnic identity and the Waitakere's "Westie" identity;
- keeping decision-making with grass roots communities and local residents;
- ensuring that low income groups including Pacific, Maori, refugees, other ethnic communities, and beneficiaries are not alienated from the democratic process because they cannot afford to run for "at large" positions;
- supporting Maori seats on Council as recognition of their past giving of land for the establishment of Auckland and respecting the tangata whenua.

Apparently, the only Pacific MP on the select committee **Su'a William Si'o** was reportedly on radio the next day praising PACIFICA's submission and oral presentation as an example of how Pacific groups should participate in such processes. Well done to Tamaki! Your success is our success. If anyone would like a copy of the submission – contact Josephine Bartley.

P.A.C.I.F.I.C.A Inc NATIONAL COUNCIL MEETING Friday 30th – Saturday 31st October 2009

Register NOW for National Council Meeting in October

"Stepping UP!" That's the theme for the upcoming Council meeting in Dunedin in October. The theme continues on from the National Conference and AGM theme earlier this year of "Yes We Can!" We'll be looking at how we are stepping up locally, regionally and nationally.

Registration packs were sent to Branch contacts/Presidents recently. If you haven't already done so – please get your registrations in and also note that if you require accommodation, contact the motelier directly. All this information is in the registration pack. Don't forget, National Council is the annual meeting of the National Executive with all Branch Presidents and/or other branch representatives. So it's important to be there. Contact the National Secretary – Ta'i George (taigeorge@ymail.com, or text on 027 4950296) if you haven't yet received your registration pack.

REGISTER FOR NATIONAL COUNCIL MEETING

30-31 October 2009, Dunedin. Contact taigeorge@ymail.com for registration pack



Central Mini-conference, Palmerston North, June



Northern Mini-conference, Whangarei, July 2009

Regional conferences - two down, one to go!

It's been busy, busy, busy since the last INK. We've had two very successful regional conferences – Central, which was hosted by the Palmerston North branch and facilitated by Central VP **Tagaloatele Peggy Fairbairn-Dunlop**, and Northern, which was hosted by Whangarei branch and facilitated by Northern VP **Josephine Bartley**. The Southern region conference is from 11-13 September 2009 and is being hosted by the Dunedin branch in Mosgiel and will be facilitated by Southern VP Deb Kesha-Lloyd.

New-born screening – PACIFICA representative

May Seager, from the Whangarei branch was recently endorsed by the National Executive as PACIFICA's representative on the Newborn Hearing Screening advisory group. You might have received an email asking for branches to consider two information documents that the advisory group wants to produce for parents whose child has just been screened with a hearing problem. We hope you had a chance to provide your thoughts directly to May, who had a very tight timeframe to respond to for the advisory group.

This is another important health issue for Pacific families and babies. In October 2005, the Newborn Hearing Screen Advisory Group found that of all New Zealanders with some degree of hearing loss Pacific peoples were: mild (13%); moderate (15%); severe (13%); profound (11%).

If you were unable to comment but interested and want to know more, please email May at sega@ihug.co.nz.

Hutt Valley/PACIFICA Inc Scholarships awarded

From our inception 30 plus years ago, PACIFICA has always been passionate about education at every level from early childhood, through the compulsory school years and into tertiary education. Our foremothers in the organisation knew it was critical to our success in Aotearoa. Each of us knows that education and the pursuit of it along with the better life it facilitates, was a key driver for Pacific peoples coming to settle in New Zealand in the 1950s.

For 11 years, in partnership with the Hutt City Council, PACIFICA Inc has offered a tertiary scholarship. Since 1999; 94 scholarships have been presented to Hutt-based students of Pacific heritage.

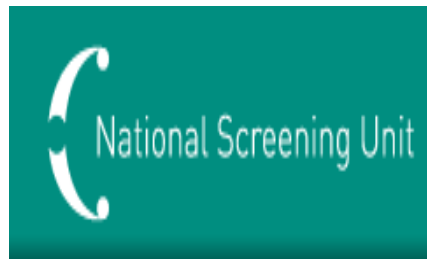
This year, 10 students received scholarships from a process that yielded very high calibre candidates. As our National President **Sally Dalhousie** told the nearly 50-strong audience, the recipients ranged from undergraduates, Masters, and a PhD candidate from universities and polytechnics. Their fields of study include; education, international relations, nursing, development studies and international relations, linguistics, and law.

(Right) Sally, with the Hutt Mayor David Ogden, surrounded by the recipients of the 2009 Hutt/PACIFICA Tertiary Scholarships at the awards ceremony in the Hutt Council Chambers in



Southern region education grants process now underway

Southern VP **Deb Kesha-Lloyd** has made lots of progress with the Southern region education grant. The Southern region was the first to reach its target for education scholarships. **Remember:** each region has a \$10,000 target to reach before they can start their own scholarships process.



NSU Update

We submitted our third report for the period of 1 April 2009 to 30 June 2009.

The reports enable us to outline the work we have carried out in relation to our contract with the National Screening Unit.

Essentially, this is about providing advice on Pacific women's screening issues. Advisory

services include; Breast Screen Aotearoa, National Cervical Screening Programme, Universal Newborn Hearing Screening and Early Intervention Programme (UNHSEIP), Antenatal HIV Screening Programme (AHIV), and Newborn Metabolic Screening Programme (NMSP) and Quality Improvement Measures for Antenatal Screening for Downs Syndrome.

Ladies, everything you do that promotes awareness of screening and increases Pacific women's participation in screening activities counts and helps us in our contract with the NSU. Please remember to include all such activities when you report as a branch.

National Conference and AGM 2010

The National Executive is hosting the next National Conference and AGM in Wellington from Friday 19 February to Saturday 20 February 2010. At our last meeting in July, we decided that the gathering would run from lunchtime Friday to the end of Saturday. Our theme is:

" PACIFICA: The N^Text Generation"

We want to imbue this conference with as much interest and enthusiasm as possible and also make explicit our intention to bring our Youth on board to encourage leadership and growth. We also consider that the digital/e-media environment as well as issues of sustainability for the Pacific are important!

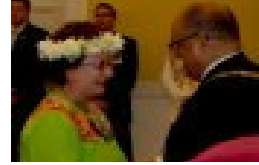
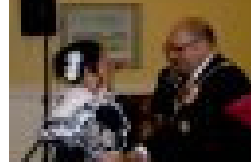
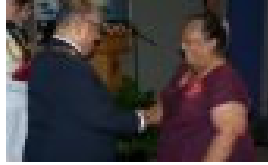
Mark your diaries now.

NATIONAL CONFERENCE & AGM 2010 HOSTED BY THE NATIONAL EXECUTIVE
Friday 19 February to Saturday 20 February 2010 in Wellington. [Venue to be confirmed]



PACIFICA women recognised in Queen's Honours

Several of our women were honoured in this years "Queen's Honours" for their services to Pacific communities. Immediate Past National President, **Dr Diane Mara** from Tiare Ahuriri branch, and **Toesulu Brown** from the Tamaki branch both received MNZM (Member of the New Zealand Order of Merit). **Anna Marshall** from Whangarei branch and **Taime Samuel** from Tangiianui branch both received the QSM (Queen's Service Medal).



Pictured at their investitures from left to right: Anna Marshall, Toesulu Brown, Taime Samuel, Diane Mara.

Meetings/Events Attended by National Executive and/or reps:

- Friday 3 July 2009: Launch of WISE women (a new branch of PPSEAWA) in Manukau.
- **Monday 3 August 2009:** UNHSEIP Implementation Advisory Group.
- **Wednesday 19 August 2009:** Human Rights Commission invitation to "high-level roundtable" to "consider ways in which pay and employment equity can now be progressed in the public and private sectors."

Events/Meetings coming up

- **Friday 18 September 2009:** Opening Ceremony of National Council of Women in NZ National Executive Meeting on in Wellington. To be attended by National President, Central Vice-President and National Secretary.
- **Saturday 19 September 2009:** 1st Update of CEDAW Report 2010 hosted by NCWNZ in Wellington.
- **Thursday 24 September 2009:** Our National President will address the Official Opening of the Māori Women's Welfare League National Conference in Whanganui.

Guidelines for Representing PACIFICA

When representing PACIFICA you are the face of the organisation.

As issues arise, there is an expectation that you will consult with your PACIFICA members.

There are several options for consulting with PACIFICA such as your branch in the first instance. If you need to consult more widely than your branch, then you may wish to contact your regional Vice President about consulting your region.

If nationwide consultation is needed then an approach can be made to the National Executive.

Contact Ta'i George if you would like a full copy of our Guidelines.

Our Mailing Address

PACIFICA Inc., PO Box 5668, Lambton Quay, Wellington 6145